

ATAD2 Antibody (N-term)
Affinity Purified Rabbit Polyclonal Antibody (Pab)
Catalog # AP13073a**Specification**

ATAD2 Antibody (N-term) - Product Information

Application	WB,E
Primary Accession	Q6PL18
Other Accession	NP_054828.2
Reactivity	Human
Host	Rabbit
Clonality	Polyclonal
Isotype	Rabbit IgG
Calculated MW	158554
Antigen Region	204-232

ATAD2 Antibody (N-term) - Additional Information**Gene ID** 29028**Other Names**

ATPase family AAA domain-containing protein 2, AAA nuclear coregulator cancer-associated protein, ANCCA, ATAD2

Target/Specificity

This ATAD2 antibody is generated from rabbits immunized with a KLH conjugated synthetic peptide between 204-232 amino acids from the N-terminal region of human ATAD2.

Dilution

WB~~1:1000

E~~Use at an assay dependent concentration.

Format

Purified polyclonal antibody supplied in PBS with 0.09% (W/V) sodium azide. This antibody is purified through a protein A column, followed by peptide affinity purification.

Storage

Maintain refrigerated at 2-8°C for up to 2 weeks. For long term storage store at -20°C in small aliquots to prevent freeze-thaw cycles.

Precautions

ATAD2 Antibody (N-term) is for research use only and not for use in diagnostic or therapeutic procedures.

ATAD2 Antibody (N-term) - Protein Information**Name** ATAD2

Function May be a transcriptional coactivator of the nuclear receptor ESR1 required to induce the expression of a subset of estradiol target genes, such as CCND1, MYC and E2F1. May play a role in the recruitment or occupancy of CREBBP at some ESR1 target gene promoters. May be required for histone hyperacetylation. Involved in the estrogen-induced cell proliferation and cell cycle progression of breast cancer cells.

Cellular Location

Nucleus

Tissue Location

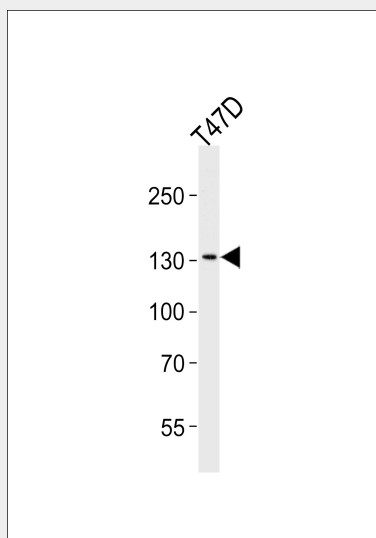
Highly expressed in estrogen receptor positive breast tumors and in osteosarcoma tumors.

ATAD2 Antibody (N-term) - Protocols

Provided below are standard protocols that you may find useful for product applications.

- [Western Blot](#)
- [Blocking Peptides](#)
- [Dot Blot](#)
- [Immunohistochemistry](#)
- [Immunofluorescence](#)
- [Immunoprecipitation](#)
- [Flow Cytometry](#)
- [Cell Culture](#)

ATAD2 Antibody (N-term) - Images



Western blot analysis of lysate from T47D cell line, using ATAD2 Antibody (N-term)(Cat. #AP13073a). AP13073a was diluted at 1:1000 at each lane. A goat anti-rabbit IgG H&L(HRP) at 1:5000 dilution was used as the secondary antibody. Lysate at 35ug.

ATAD2 Antibody (N-term) - Background

A large family of ATPases has been described, whose key feature is that they share a conserved region of about 220 amino acids that contains an ATP-binding site. The proteins that belong to this family either contain one or two AAA (ATPases Associated

with diverse cellular Activities) domains. AAA family proteins often perform chaperone-like functions that assist in the assembly, operation, or disassembly of protein complexes. The protein encoded by this gene contains two AAA domains, as well as a bromodomain.

ATAD2 Antibody (N-term) - References

Revenko, A.S., et al. Mol. Cell. Biol. 30(22):5260-5272(2010)
Ciro, M., et al. Cancer Res. 69(21):8491-8498(2009)
Zou, J.X., et al. Cancer Res. 69(8):3339-3346(2009)
Zou, J.X., et al. Proc. Natl. Acad. Sci. U.S.A. 104(46):18067-18072(2007)
Olsen, J.V., et al. Cell 127(3):635-648(2006)